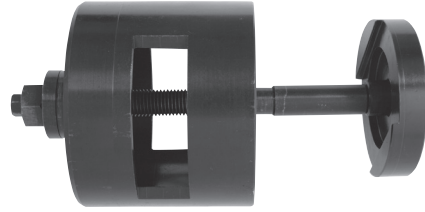




Replacement



Removal

LASER[®] Rear Axle Carrier Bush Tool BMW X5 Series

Instructions

4781

Due to the nature of the task the nut and bar are considered consumable and not therefore covered by the Tool Connection guarantee.



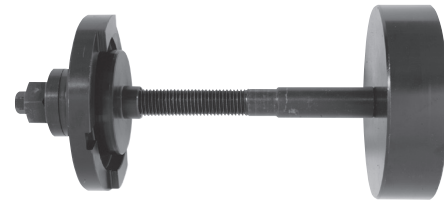
www.lasertools.co.uk

Guarantee

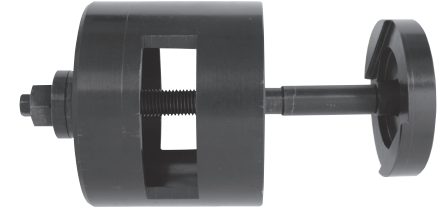
This item contains consumable elements and are **NOT** covered by the Tool Connection Guarantee. For spares contact our service department direct on: **+44 (0) 1926 818186**.



Distributed by The Tool Connection Ltd
Kineton Road, Southam, Warwickshire CV47 0DR
T +44 (0) 1926 815000 F +44 (0) 1926 815888
info@toolconnection.co.uk www.toolconnection.co.uk



Replacement



Removal

LASER[®] Rear Axle Carrier Bush Tool BMW X5 Series

Instructions

4781

Due to the nature of the task the nut and bar are considered consumable and not therefore covered by the Tool Connection guarantee.



www.lasertools.co.uk

Guarantee

This item contains consumable elements and are **NOT** covered by the Tool Connection Guarantee. For spares contact our service department direct on: **+44 (0) 1926 818186**.



Distributed by The Tool Connection Ltd
Kineton Road, Southam, Warwickshire CV47 0DR
T +44 (0) 1926 815000 F +44 (0) 1926 815888
info@toolconnection.co.uk www.toolconnection.co.uk

Rear Axle Carrier Bush Tool – BMW X5 Series

This Rear Axle Carrier Bush Tool is designed for the extraction and replacement of bushes insitu without removing the rear carrier assembly. Specifically for use on BMW X5 series (E53 Models only). Manufactured from high tensile steel for extra strength in Sheffield, England

Before you start

- Jack up the rear end of the vehicle and support it with axle stands
- Remove the rear wheels
- Make sure the brake hoses are kept away from the work area to avoid damage
- For procedure refer to vehicle manufacturers' hand book or reputable workshop manual
- You will need 2 x 24mm Ring Spanners or Sockets
- Mark where the old bush sat in the axle carrier to ensure correct alignment
- Wedge down the axle carrier with a wooden block to give sufficient access
- Apply penetrating oil to the old bush to assist removal

Precautions

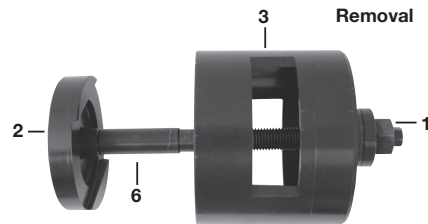
- Make sure the vehicle is securely elevated and supported with axle stands
- Wear suitable eye protection
- Always grease the Force Nut Assembly and Force Bar before and after every job
- On some vehicles Locktite® is applied to the bushes. To check if this is required consult your workshop manual
- If Locktite® is applied, the vehicle should not be used for 24 hrs
- **DO NOT USE AIR TOOLS WITH THIS PRODUCT**

Contents

1. Force Nut Bearing Assembly (Replacement Part No 1794)
2. Removing Sleeve - small
3. Removing Sleeve - large
4. Forcing Sleeve – large threaded
5. Forcing Sleeve - small
6. Force Bar (Replacement Part No 1795)

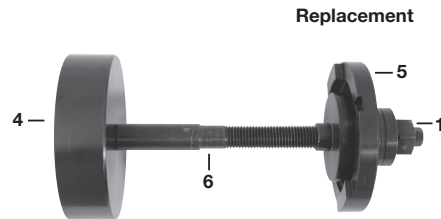
Instructions – Removal

1. Lubricate Nut and Bar (Items 1 & 6)
2. Assemble tool as shown using items 6,1,2,3
3. Apply penetrating oil to bush.
4. Using a hot air gun, heat bush housing for at least 2 minutes.
5. With item 2 on top of the bush, feed the Force Bar (6) through the bush and fix item 3 onto the base of the old bush and the axle carrier
6. Attach the Force Nut Assembly (1) and tighten using a 24mm spanner
7. This should force the bush out
8. If this proves difficult, remove tool, add more penetrating oil and try again



Instructions – Replacement

1. Check with your workshop manual to see if an adhesive is recommended
2. Re-grease the Force Nut Assembly and the bar
3. Apply liquid soap or similar (recommend: Circo Light) to the new bush to aid installation
4. Re-assemble the tool using items 6,1,4,5
5. Position Item 4 on top of the axle carrier and screw in the Force Bar (6)
6. Check the alignment with marks made earlier
7. Slide item 5 onto the Force Bar and fix the Force Nut Assembly
8. Slowly turn the Force Nut Assembly using a 24mm spanner and gradually force the bush into place
9. Check constantly for correct alignment
10. Replace all other parts in accordance with your workshop manual



Perform task on the other side if necessary. Refit the wheels to manufacturers recommended torques

Rear Axle Carrier Bush Tool – BMW X5 Series

This Rear Axle Carrier Bush Tool is designed for the extraction and replacement of bushes insitu without removing the rear carrier assembly. Specifically for use on BMW X5 series (E53 Models only). Manufactured from high tensile steel for extra strength in Sheffield, England

Before you start

- Jack up the rear end of the vehicle and support it with axle stands
- Remove the rear wheels
- Make sure the brake hoses are kept away from the work area to avoid damage
- For procedure refer to vehicle manufacturers' hand book or reputable workshop manual
- You will need 2 x 24mm Ring Spanners or Sockets
- Mark where the old bush sat in the axle carrier to ensure correct alignment
- Wedge down the axle carrier with a wooden block to give sufficient access
- Apply penetrating oil to the old bush to assist removal

Precautions

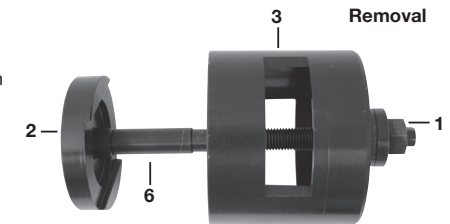
- Make sure the vehicle is securely elevated and supported with axle stands
- Wear suitable eye protection
- Always grease the Force Nut Assembly and Force Bar before and after every job
- On some vehicles Locktite® is applied to the bushes. To check if this is required consult your workshop manual
- If Locktite® is applied, the vehicle should not be used for 24 hrs
- **DO NOT USE AIR TOOLS WITH THIS PRODUCT**

Contents

1. Force Nut Bearing Assembly (Replacement Part No 1794)
2. Removing Sleeve - small
3. Removing Sleeve - large
4. Forcing Sleeve – large threaded
5. Forcing Sleeve - small
6. Force Bar (Replacement Part No 1795)

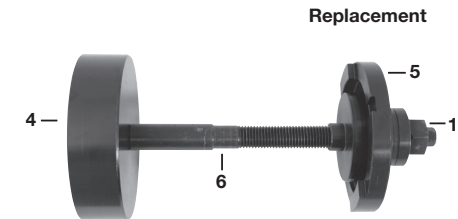
Instructions – Removal

1. Lubricate Nut and Bar (Items 1 & 6)
2. Assemble tool as shown using items 6,1,2,3
3. Apply penetrating oil to bush.
4. Using a hot air gun, heat bush housing for at least 2 minutes.
5. With item 2 on top of the bush, feed the Force Bar (6) through the bush and fix item 3 onto the base of the old bush and the axle carrier
6. Attach the Force Nut Assembly (1) and tighten using a 24mm spanner
7. This should force the bush out
8. If this proves difficult, remove tool, add more penetrating oil and try again



Instructions – Replacement

1. Check with your workshop manual to see if an adhesive is recommended
2. Re-grease the Force Nut Assembly and the bar
3. Apply liquid soap or similar (recommend: Circo Light) to the new bush to aid installation
4. Re-assemble the tool using items 6,1,4,5
5. Position Item 4 on top of the axle carrier and screw in the Force Bar (6)
6. Check the alignment with marks made earlier
7. Slide item 5 onto the Force Bar and fix the Force Nut Assembly
8. Slowly turn the Force Nut Assembly using a 24mm spanner and gradually force the bush into place
9. Check constantly for correct alignment
10. Replace all other parts in accordance with your workshop manual



Perform task on the other side if necessary. Refit the wheels to manufacturers recommended torques