



# Discovery 1 and Range Rover Classic Side Steps (Not TD5)

Fitting Instructions (PM409)

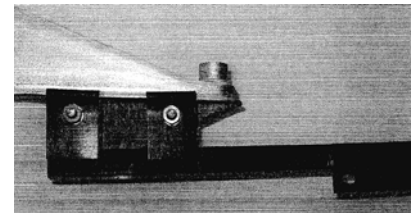
---



## **Please Note:**

Quick fit side steps now have bolt on legs. These **MUST** be attached to the steps first. Then follow standard fitting instructions. Legs cannot be fitted incorrectly providing the clamps face upwards. The steps clamp on to the lower lip of the front and rear out riggers (similar to a roof rack). No drilling or holes are

1. Slacken all clamps to almost the end of their threads.
2. Offer up step to align with outriggers.
3. Loosely fit front clamps.
4. Loosely fit rear clamps.
5. Align step along length of vehicle by pulling in or out.
6. Tighten all bolts and clamps securely.
7. Test step by application of a load.



Chassis Mounting Arrangement

Your sidesteps are now installed.

Note: Tapered end of steps goes to the front of the vehicle (13mm and 17mm spanners required, 15 minutes to fit per pair)