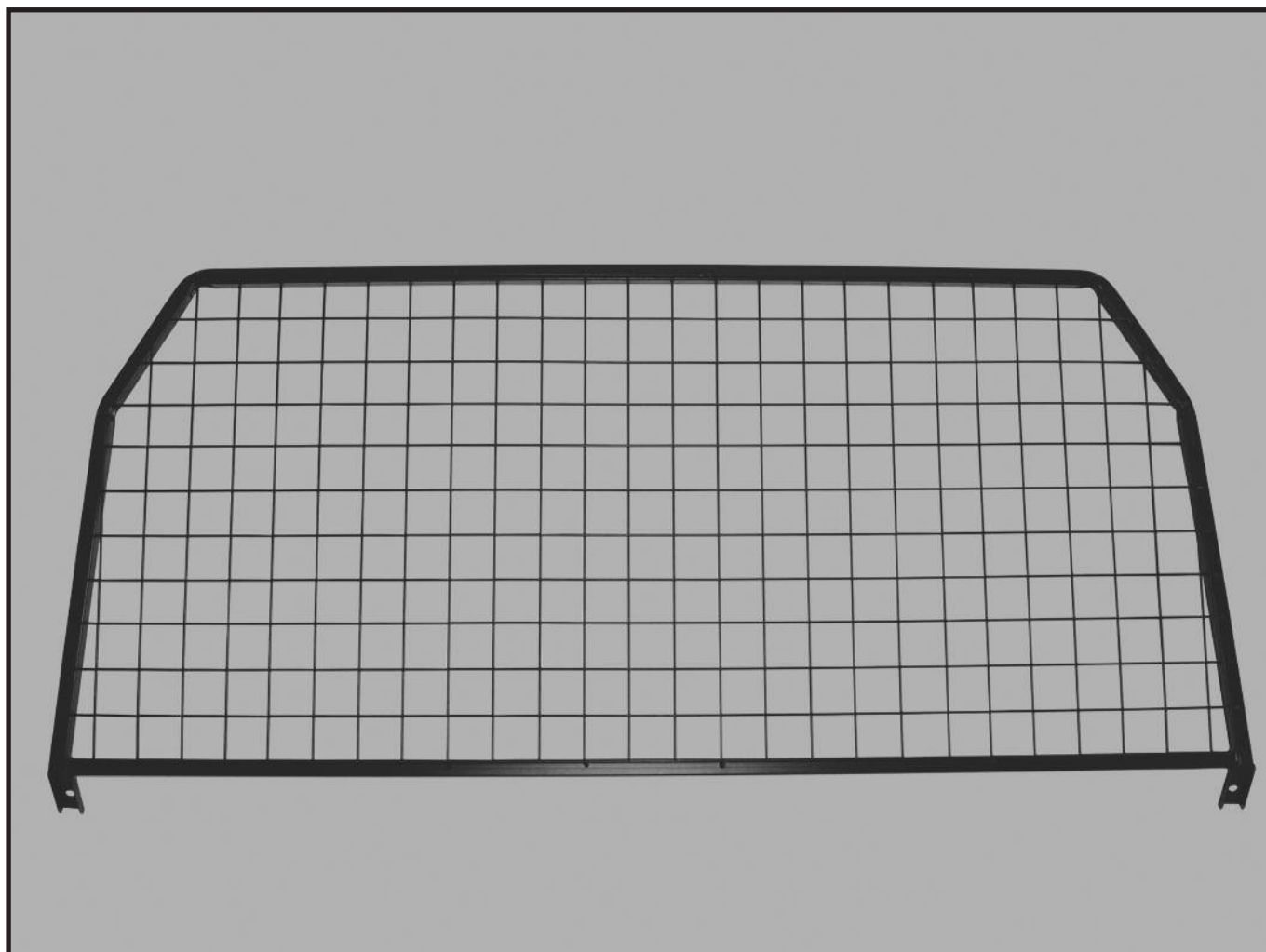


FITTING INSTRUCTIONS

> Defender



Dog Guard

BRITPART

The quality parts for Land Rovers

Fitting Instructions

Defender - Dog Guard

Attach mounting feet (B) to Dog Guard (A) using thumbscrews (H) and grey plastic sleeve - see illustration.

Tilt front seat and slide forward.

Pass assembled Dog Guard into vehicle with mountings anchored forward and resting on top of bulkhead.

Centralise Dog Guard in vehicle and mark rivet heads (visible through slots in feet).

Remove Dog Guard and drill out rivets using M9 (11/32") drill.

Attach top bracket (J) onto locating tab on top edge of Dog Guard (with angled face rearwards).

Refit Dog Guard and mount in position using fixings supplied (see illustration) and tighten all bolts.

Lift top bracket (J) until contact with headlining is made and mark 2 holes.

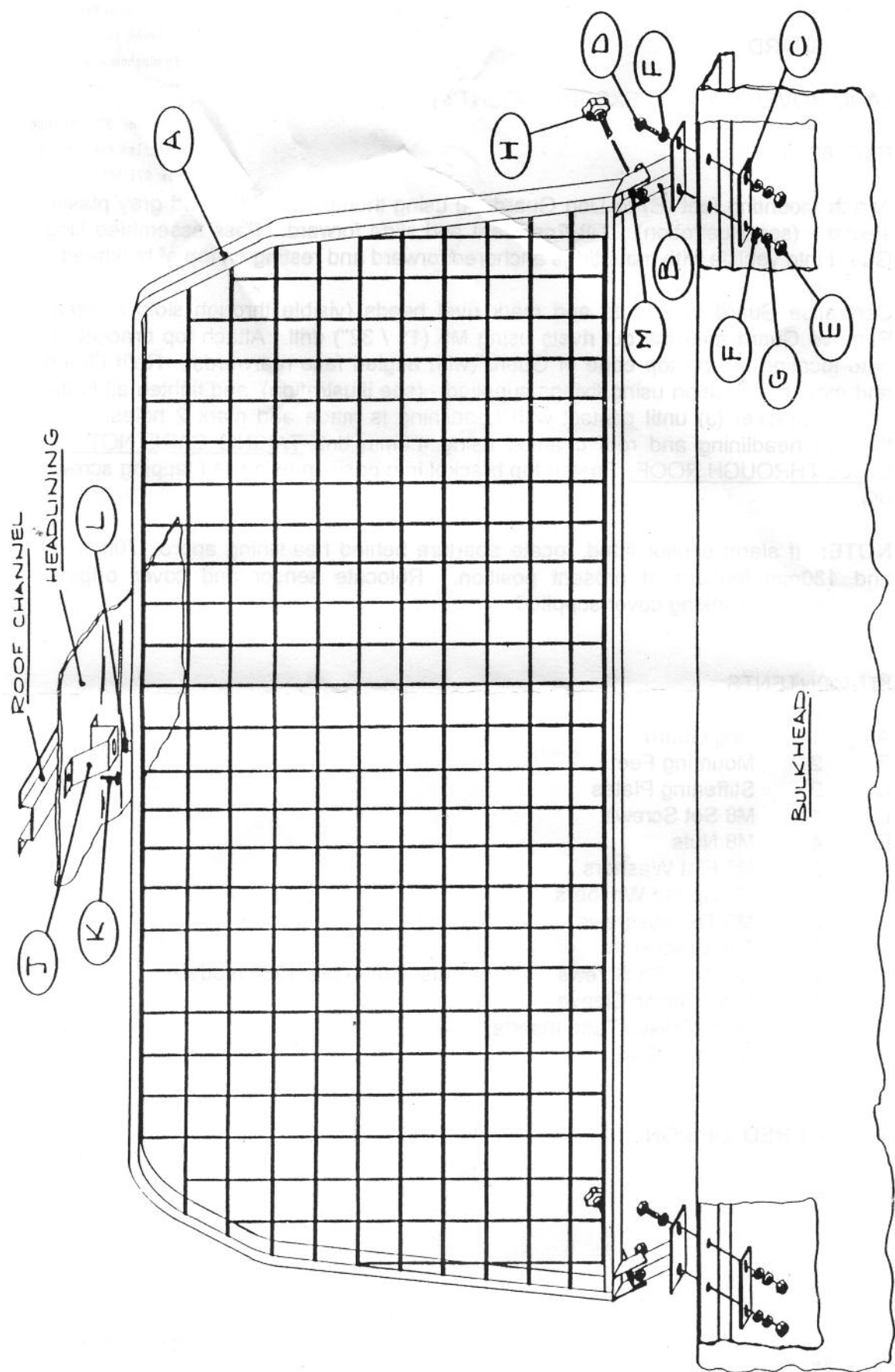
Drill through headlining and roof channel using 4.0mm drill TAKING CARE NOT TO DRILL THROUGH ROOF.

Fasten top bracket into position using self tapping screws (K).

NOTE - If alarm sensor fitted, locate aperture behind headlining approx 70mm up and 130mm forward of present position. Relocate sensor and cover original aperture with blanking cover supplied.

Kit contents -

A	1	Dog Guard
B	2	Mounting Feet
C	2	Stiffening Plates
D	4	M8 Set Screws
E	4	M8 Nuts
F	8	M8 Flat Washers
G	4	M8 Spring Washers
H	2	M8 Thumbscrews
J	1	Top Bracket
K	2	No. 10 x S/t Screws - discard on pre-1989 models
L	1	Grey Plastic Sleeve
M	2	Black Plastic Tube Inserts
N	1	Blanking Cover



WARNING

Accessories which are not properly fitted can be dangerous.

Read the instructions carefully prior to fitting.

Whilst fitting, comply with the instructions at all times.